

26/111 Eagle Street, Brisbane Q 4000
D15/33 Port Drive, Airlie Beach Q 4802
P: 0732269105
E: info@oceand.com.au
ABN: 70118964855

Study Tours & Edu Tourism Packages



About Ocean Dynamics

Since commencing water sports and charter operations in 2005, the Ocean Dynamics motto has been ***"It's all about you"***. We have carried this through to the present day, and we strive to ensure guest satisfaction on each and every tour and activity. Our team are well trained, dedicated marine professionals who go the extra mile to ensure clients are completely satisfied with their marine experience. Our team love the Whitsundays and showcasing our beautiful region makes them proud every day.

We have held advanced ECO Certification since 2006, and are active members of the tourism community – including Whitsunday Tourism, SKAL International and QITC.

Ocean Dynamics has a diverse range of experience in all watersports activities, including diving, fishing, snorkelling, beach trips, jet ski tours, private charters and many other water based activities. The company currently owns 7 motor vessels a 49 foot luxury sailing vessel and a large fleet of jet ski's. We have many other non-motorised products available, such as stand up paddleboarding and kayaking.

Ocean Dynamics has an operations office at Airlie Beach and is dedicated to day to day management, tour bookings and exclusive charter options, as well as an office in Brisbane CBD where the administration and management is facilitated. We also have operations and a large office at Hayman Island, in the Whitsundays.

The Director of Ocean Dynamics, Carolyn Lewis is a qualified boat captain, and pilot who also holds qualifications in business management and marketing. Carolyn is supported by her husband, Stewart Lewis, who is the company CEO. Stewart hold degrees in engineering and an MBA. Carolyn and Stewart also own a successful mining consultancy based in Brisbane with an international client base.


Ocean Dynamics is an Australian owned and operated family business, with our eldest two children now working full time in the company. Tyler Lewis is a Senior Skipper on our larger vessels, and holds a Bachelors Degree in Business Management, and Bronte Lewis is our Business Development Manager, and holds a Bachelors Degree in Exercise and Nutrition and is currently studying her Masters in Primary School Teaching. Ocean Dynamics has been operating in the Whitsundays since 2005, and the team strives to ensure that each and every client receives 5 star service.

The Ocean Dynamics crew are personally trained and mentored by Carolyn, and all vessels undergo annual refits to keep them in pristine condition. It is this commitment and delivery of five star service that has given Ocean Dynamics the reputation that is sought after by 4, 5 & 6 star resorts. This professionalism and safety would be carried through to our Study and Edu Tours, ensuring the highest standards for students. We have selected our accommodation, restaurant and other partners carefully ensure a seamless delivery of these tours.

We are happy to tailor any package for schools, and if what is listed in these packages does not fit your requirements, we are more than happy to discuss your options, available timing and student ages to create the perfect bespoke Study or Edu ECO tour.

Ocean Dynamics has a COVID Safe Plan and will ensure social distancing requirements are maintained while in place.

Package 1 – Local Day Tour

| | |
|-------------------------------------|--|
| Member Business Name: | Ocean Dynamics Pty Ltd |
| Business Contact: | Carolyn Lewis |
| Study Tour & Eco Tourism Itinerary: | <p><u>SNORKEL AND BEACH ECO TOUR</u></p> <p>A full day boat tour to the Inner Great Barrier Reef and Whitehaven Beach:</p> <ul style="list-style-type: none"> - Eco talks by experienced guides about the history of the reef; - Guided snorkel experience on the reef; - Eco talk on the history of Whitehaven Beach and how it was formed; - Information on how to preserve the reef; - Age appropriate activities (ie making sun dials, treasure hunt etc) - Includes individual lunch packs (nut free) <p>Optional Activities (POA):</p> <ul style="list-style-type: none"> - Optional activities (costs apply) for cultural experience and Indigenous locals to provide immersive local history lessons and hands on experiences - Guided Hike - Try Scuba Diving – 12+ years old <p>Pricing:</p> <ul style="list-style-type: none"> - From \$250 per student for a 6-7 hour experience. - Price based on a minimum of 24 students, if less students price may increase |
| Accommodation Offering: | N/A Day trip for local schools |
| Restaurant Offering: | Individual lunch packs will be provided, with filtered water available on the vessel throughout the day |
| I accept the terms and conditions: | Yes |
| Signature: |  |
| Date: | 27/5/20 |
| Phone: | 0732269105 / 0499862021 |
| Email: | carolyn@oceand.com.au |

Package 2 – Three to Five Day Tour (Extended 1 to 2 week tours available)

| | |
|-------------------------------------|---|
| Member Business Name: | Ocean Dynamics Pty Ltd |
| Business Contact: | Carolyn Lewis |
| Study Tour & Eco Tourism Itinerary: | <p><u>BEST OF THE WHITSUNDAYS - REEF AND BEACH 3 TO 5 DAY ECO TOUR</u></p> <p><u>Day One</u> Arrival</p> <ul style="list-style-type: none"> - Arrive at Airlie Beach and check into accommodation. - Afternoon activity in Airlie Beach (determined dependent on arrival time) - If arriving by air, bus transfers will be arranged - Dinner and story telling at the accommodation - <p><u>Day Two</u> A full day boat tour to the Inner Great Barrier Reef and Whitehaven Beach:</p> <ul style="list-style-type: none"> - Eco talks by experienced guides about the history of the reef; - Guided snorkel experience on the reef; - Eco talk on the history of Whitehaven Beach and how it was formed; - Information on how to preserve the reef; - Age appropriate activities (ie making sun dials, treasure hunt etc) - Includes individual lunch packs (nut free) <p>Optional Activities (POA):</p> <ul style="list-style-type: none"> - Optional activities (costs apply) for cultural experience and Indigenous locals to provide immersive local history lessons and hands on experiences - Guided Hike - Try Scuba Diving – 12+ years old <p><u>Day Three</u> Immersive guide hike</p> <ul style="list-style-type: none"> - Honey Eater Bush Walk (7km) with morning tea picnic – learn about the eco systems in the tropical rainforest from local experts; - Swim and picnic lunch at New Beach at Port of Airlie or Airlie Creek - Time at leisure in the after with optional activities OR depart if on a Three Day Excursion <p>Optional Activities (POA):</p> <ul style="list-style-type: none"> - Optional activities (costs apply) for cultural experience and Indigenous locals to provide immersive local history lessons and hands on experiences |

Day Four

On Water Immersive Experience – several options to suit all age groups

- Learn to sail day
- Boat and jet ski licence training day 15+ years old (additional fees apply)
- Learn to tie marine knots
- Sailing day on an ex-Sydney to Hobart yacht (additional fees apply)

Day Five

Pack up ready to depart and optional “behind the scenes in hospitality” tour in the morning if the departure is in the afternoon.


Extended 1-2 Week Tour Experience Options (these experiences are also available on the 3-5 day packages instead of listed activities).

There are several amazing ECO and educational experiences that can be offered for 1-2 week Tours. Many of the options can focus on specific areas of the Australian Curriculum, and the OD team can work with teachers and schools to tailor the excursions to suit age group and subject requirements. Below are just some of the great experiences we can offer:

- Cultural bush experiences incorporating indigenous guides – learn star gazing, dot paintings, boomerang throwing and all about bush tucker;
- Survival courses – how to survive at sea or in the bush;
- 2 Days in Townsville, exploring Reef Head Quarters and partaking in many of the programs Reef HQ have to offer, with bus transport between Townsville and Airlie Beach provided
- Students can partake in their open water dive course (3-4 days) – must be 10+ years old
- Engineering and boat maintenance – learn onboard a range of charter vessels from small outboards, to large 1500hp inboard diesel engines (and everything in between. Students will be able to utilise the Engine training room at the Whitsunday Maritime College;
- Day trip to Bowen to explore the beautiful beaches, and history of the region. Stop for a photo at the Big Mango, and enjoy world famous fish and chips at the beach;
- A more in depth sailing training course recognised by Sailing Australia, and learn about the history of famous Australian sailing races, such as the Sydney to Hobart Yacht race, and meet skippers and competitors who have sailed in the race;
- Exercise and nutrition – training and guidance in real life scenarios by our in-house qualified team, including yoga classes;
- Culinary “day in the kitchen” with local chefs.

Accommodation
Offering:

Accommodation Option 1 – Bay the Bay Resort (budget resort style)
Accommodation Option 2 – Seastar Resort (luxury resort style)

| | |
|------------------------------------|---|
| Pricing: | 3 Day/2 Night Package Budget style accommodation: From \$895 per student Luxury style accommodation: From \$995 per student 5 Day/4 Night Package Budget style accommodation: From \$1150 per student Luxury style accommodation: From \$1350 per student These prices are based on a minimum of 24 students and do not include airport transfers. Airport transfers are from \$30 per student return (Proserpine Airport) and \$60 per student return (Mackay Airport) |
| Restaurant Offering: | Breakfast: Continental Breakfast at accommodation (options available for cooked restaurant breakfast if required) Lunch: Prepacked picnic or BBQ provided by commercial kitchen Dinner: Fish D'Vine Airlie Beach (see attached sample menus) Optional Pool side BBQ at accommodation one night Snacks: Locally sourced prepackages snacks and fresh fruit will be provided All dietary requirements will be catered for. |
| I accept the terms and conditions: | Yes |
| Signature: |  |
| Date: | 27/5/20 |
| Phone: | 0732269105 / 0499862021 |
| Email: | carolyn@oceand.com.au |

Important Information

Who do I contact with questions and how do I book the tours?

For any enquiries or bookings you can email info@oceand.com.au or call our office on 07 32269015. For more urgent enquiries phone Carolyn Lewis on 0499862021.

How long are the tours?

Ocean Dynamics is able to offer a range of tours from a 1 day experience on Ocean Enigma to experience the Great Barrier Reef and awesome beaches, and/or hikes, to a totally immersive, educational experience for students of all ages staying in the Whitsundays for 3-5 nights, or longer packages of up to 2 weeks.

The packages outlined in this document are a guideline only and we are extremely flexible with what we can offer.

What is included?

The day package includes the boat tour and all catering during the day. The overnight packages include the tours listed, all catering and accommodation (2 levels available).

There are many optional extras available for additional costs which we can quote on if desired.

What are the minimum and maximum numbers?

Our tours are based on groups of 24 students, however we are able to provide costing for tours for small groups (minimum 5) and larger groups (maximum 100). Additional accommodation and vessel options may be required and this will be presented if requested.

What type of transport is being used?

When travelling by boat, the vessels will be fully commercial Australian Maritime Safety Authority (AMSA) compliant vessels, with experienced marine crew.

When travelling by bus, the buses will be fully commercial buses operated by locals with an excellent safety standard and seat belts.

What are the bedding configurations and accommodation offerings?

We are offering two levels of accommodation style, with a budget style accommodation at the entry level pricing, and a luxury resort style for the higher end pricing. Ocean Dynamics has worked with both resorts for over 10 years and can highly recommend them. Attached are profiles of both properties in the Annexures.

What are the menus?

Ocean Dynamics will work with Fish D'Vine to catering for the dinners. These can be delivered to the accommodation each night or eaten in the restaurant. These menus are a guide and can be altered to suit budget and nutritional requirements of students, and also tailored to specific age groups as required. Example menus are provided in the Annexures.

Australian Curriculum

Ocean Dynamics can tailor our educational experiences to target particular areas of the curriculum, below are examples of content descriptors that can be targeted during the study tours and edu trips, they are primarily from the Science, Mathematics, Humanities & Social Sciences and Health and Physical Education strands.

Ocean Dynamics experiences can also be used to target the cross-curriculum priorities for Sustainability and Aboriginal and Torres Strait Islander Histories and Cultures.

Bronte Lewis, the Ocean Dynamics Business Development Manager, has a Bachelors Degree in Exercise and Nutrition, and is currently studying her Masters of Primary School Teaching.

Peter Upton, our business Associate, holds a Bachelor of Human Movement Studies, (Exercise Physiology), a Diploma of Teaching, Post Graduate Diploma in Occupational Health and Safety and a Diploma of Management.

Bronte and Peter are able to work with the teachers to ensure they tours are tailored to meet any specific curriculum requirements.

Year 1

- Living things live in different places where their needs are met (ACSSU211)
 - Exploring different habitats in the local environment such as the beach, bush and backyard
- Everyday materials can be physically changed in a variety of ways (ACSSU018)
 - Exploring how Aboriginal and Torres Strait Islander Peoples apply physical changes to natural materials to render them useful for particular purposes (OI.2, OI.5)
- People use science in their daily lives, including when caring for their environment and living things (ACSHE022)
 - Considering that technologies used by Aboriginal and Torres Strait Islander Peoples require an understanding of how materials can be sustainably sourced to make tools and weapons, musical instruments, clothing, cosmetics and artworks (OI.2, OI.3)
 - Considering how science is used in activities such as cooking, fishing, transport, sport, medicine and caring for plants and animals
- Sort and record information and data, including location, in tables and on plans and labelled maps (ACHASSI020)
 - Creating and sharing concept maps to show personal understanding of their world and making artefact and photo displays to show the features of a place (for example, collections of natural and constructed things from the environment)
 - Recording data about the location of places and their features on maps and/or plans

Year 3

- Science knowledge helps people to understand the effect of their actions (ACSHE051)
 - Researching Aboriginal and Torres Strait Islander Peoples' knowledge of the local natural environment, such as the characteristics of plants and animals (OI.2, OI.3, OI.5)

- Living things can be grouped on the basis of observable features and can be distinguished from non-living things (ACSSU044)
 - Investigating Aboriginal and Torres Strait Islander Peoples' systems of classifying living things and how these systems differ from those used by contemporary science (OI.2, OI.3, OI.5)
 - Recognising Aboriginal and Torres Strait Islander Peoples' use of observable features to group living things (OI.2, OI.3, OI.5)
 - Recognising characteristics of living things such as growing, moving, sensitivity and reproducing
- Collect data, organise into categories and create displays using lists, tables, picture graphs and simple column graphs, with and without the use of digital technologies (ACMSP069)
 - Collecting data to investigate features in the natural environment
- Record, sort and represent data and the location of places and their characteristics in different formats, including simple graphs, tables and maps, using discipline-appropriate conventions (ACHASSI054)
 - Using information technologies to record and organise information in tables, databases and digital concept maps (for example, creating a consequence chart to show what happens when school rules are not followed, or when human settlement damages a component of the natural environment)
- Reflect on learning to propose actions in response to an issue or challenge and consider possible effects of proposed actions (ACHASSI060)
 - Reflecting on anticipated effects of actions designed to protect and improve places that people perceive as important (for example, places of environmental value, cultural value or historic significance)
- Identify and practise strategies to promote health, safety and wellbeing (ACPPS036)
 - Examining their own eating patterns by researching The Australian Guide to Healthy Eating and identifying healthier food choices
 - Proposing changes they can make to their daily routines to reduce sedentary behaviour and increase physical activity levels

Year 5

- Living things have structural features and adaptations that help them to survive in their environment (ACSSU043)
 - Investigating Aboriginal and Torres Strait Islander Peoples' knowledge of the adaptations of certain species and how those adaptations can be exploited (OI.5, OI.9)
 - Explaining how particular adaptations help survival such as nocturnal behaviour
 - Describing and listing adaptations of living things suited for particular Australian environments
- Use a grid reference system to describe locations. Describe routes using landmarks and directional language (ACMMG113)
 - Comparing aerial views of Country, desert paintings and maps with grid references
- Plan and practise strategies to promote health, safety and wellbeing (ACPPS054)
 - Comparing product labels on food items or nutritional information in recipes and suggesting ways to improve the nutritional value of meals

- Proposing and implementing opportunities to increase their physical activity levels at school and at home
- Selecting and practising appropriate responses to promote safety in different situations, including water- and traffic-related situations
- Explore how participation in outdoor activities supports personal and community health and wellbeing and creates connections to natural and built environments (ACPPS059)
 - Exploring ways in which people can connect with other members of their community through participating in physical activities in natural settings and built environments
 - Discussing how a connection to the local community, environment or special places can influence personal and community health and wellbeing
 - Discussing how access to natural and built environments can help or hinder participation in physical activities
 - Exploring Aboriginal and Torres Strait Islander understandings of special places and the connection of these places to physical activities

Year 7

- Interactions between organisms, including the effects of human activities can be represented by food chains and food webs (ACSSU112)
 - Investigating Aboriginal and Torres Strait Islander Peoples' responses to the disruptive interactions of invasive species and their effect on important food webs that many communities are a part of, and depend on, for produce and medicine (OI.2, OI.5, OI.6) *and* using food chains to show feeding relationships in a habitat
 - Constructing and interpreting food webs to show relationships between organisms in an environment
 - Classifying organisms of an environment according to their position in a food chain
 - Recognising the role of microorganisms within food chains and food webs
 - Investigating the effect of human activity on local habitats, such as deforestation, agriculture or the introduction of new species
 - Exploring how living things can cause changes to their environment and impact other living things, such as the effect of the crown of thorns star fish
 - Researching specific examples of human activity, such as the effects of palm oil production in Sumatra and Borneo
- Science knowledge can develop through collaboration across the disciplines of science and the contributions of people from a range of cultures (ACSHE223)
 - Investigating how land management practices of Aboriginal and Torres Strait Islander Peoples informs sustainable management of the environment to protect biodiversity (OI.5, OI.9)
 - Considering how water use and management relies on knowledge from different areas of science, and involves the application of technology
 - Identifying the contributions of Australian scientists to the study of human impact on environments and to local environmental management projects
- Identify and investigate issues involving numerical data collected from primary and secondary sources (ACMSP169)
 - Obtaining secondary data from newspapers, the Internet and the Australian Bureau of Statistics

- Construct and compare a range of data displays including stem-and-leaf plots and dot plots (ACMSP170)
 - Understanding that some data representations are more appropriate than others for particular data sets, and answering questions about those data sets
- Construct significant questions and propositions to guide investigations about people, events, developments, places, systems and challenges (ACHASSI152)
 - Developing and revising questions to frame, guide and redirect geographical, historical and social inquiries or stages of an enterprise project
 - Developing a range of different types of questions for specific purposes including follow-up questions that deepen understandings (for example, questions to design and revise the stages of an enterprise project, questions to test the validity of assumptions, questions that evaluate decisions and opinions, questions about protocols and sensitivities)
- Organise, categorise and represent data in a range of appropriate formats using discipline-specific conventions, including different types of graphs, tables, field sketches and annotated diagrams, and maps at different scales (ACHASSI154)
 - Deciding which formats best suit the presentation of gathered information after consideration of a range of digital and non-digital media
 - constructing tables, graphs and annotated diagrams with the help of digital technologies to represent collected data (for example, diagrams showing how water flows through the environment and connects places; graphs quantifying the influence of environmental quality on aspects of the liveability of places; graphs showing the religious composition of past and contemporary Australian society)
 - creating maps using computer mapping software or satellite images to show distributions and patterns (for example, to show the spatial distribution and patterns of liveability or the areas affected by a hydrological hazard in Australia and other parts of the world)
- Sequence information about events, developments, periods and phenomena using a variety of discipline-appropriate formats and conventions including chronological frameworks that use dating conventions (ACHASSI155)
 - modelling a system (for example, an ecosystem or hydrological cycle) and using it to explain the sequence of effects when elements are manipulated
- Plan and use health practices, behaviours and resources to enhance health, safety and wellbeing of their communities (ACPPS077)
 - Investigating preventive health practices relevant to young people, and designing and implementing health promotion activities targeting these practices
 - Investigating food-serving recommendations from The Australian Guide to Healthy Eating and producing a guide to help students make healthy choices when buying food from the school canteen
 - Examining how different cultures value the contribution of the mind-body-spirit connection to health and wellbeing
 - Explore how spiritual connection to Country/Place enhances health and wellbeing for Aboriginal and Torres Strait Islander Peoples

Year 9

- Ecosystems consist of communities of interdependent organisms and abiotic components of the environment; matter and energy flow through these systems (ACSSU176)
 - Investigating the interdependence of communities and the role of Aboriginal and Torres Strait Islander Peoples in maintaining their environment (OI.2, OI.5)
 - Exploring interactions between organisms such as predator/prey, parasites, competitors, pollinators and disease
 - Examining factors that affect population sizes such as seasonal changes, destruction of habitats, introduced species
 - Considering how energy flows into and out of an ecosystem via the pathways of food webs, and how it must be replaced to maintain the sustainability of the system
 - Investigating how ecosystems change as a result of events such as bushfires, drought and flooding
- Distribution and characteristics of biomes as regions with distinctive climates, soils, vegetation and productivity (ACHGK060)
 - Identifying and describing the major aquatic and terrestrial biomes of Australia and the world, and their spatial distribution
 - Examining the influence of climate on biomass production (as measured by net primary productivity) in different biomes
- Challenges to food production, including land and water degradation, shortage of fresh water, competing land uses, and climate change, for Australia and other areas of the world (ACHGK063)
 - Exploring environmental challenges to food production from land degradation (soil erosion, salinity, desertification), industrial pollution, water scarcity and climate change
 - Identifying the impacts on food production from competing land uses (for example, sacred sites, urban and industrial uses, mining, production of food crops for biofuels, production of food crops for livestock, and recreation (such as golf courses))
 - Evaluating whether some ways of increasing food production could threaten sustainability investigating the impacts of alterations of biomes on the productivity and availability of staple resources for Aboriginal and Torres Strait Islander Peoples (for example, murnong or yam daisy in Victoria)
- The effects of people's travel, recreational, cultural or leisure choices on places, and the implications for the future of these places (ACHGK069)
 - Investigating the global growth of tourism and its likely effects on the future of places
 - Discussing the effects of people's cultural and leisure choices on towns and cities (for example, predicting how changing choices may affect these and other places in the future)

ANNEXURES

1. Reef & Beach Day Tour
2. Hikes & Cultural Experiences
3. Sailing Experiences
4. Reef HQ Info Sheet
5. Accommodation Options 1 & 2
6. Dinner Menus
7. Professional Profiles of Key Personnel
8. Ocean Dynamics Relevant Certificates



OCEAN ENIGMA



EDUCATIONAL REEF & BEACH ECO EXCURSIONS

| | |
|--------------------|--|
| Name: | Ocean Enigma |
| Make & Propulsion: | Milner 80 2 x Deutz 616 1500hp |
| Length: | 80 Feet (24 meters) |
| Vessel Speed: | Cruising 18knts Top Speed 28knts |
| Crew: | Minimum 3 – Maximum 10 |
| Max Passengers: | 80 Local Waters |
| Tour Options: | Beach Snorkel Dive Cultural Walks |
| Bathroom: | 3 Bathrooms & 2 Toilets |
| Features: | Ocean Enigma is a luxury motor yacht, with a large back deck, perfect for diving and snorkelling, and upper deck space to relax and enjoy the view. Stand up paddleboards and snorkelling equipment provided on board. |
| Catering: | Pre-packed Australian made cookies & Fresh locally grown whole fruits for m/t Individual sandwich or wrap Pre-packaged nutritious snack for a/t <i>*nut free vessel</i> |
| Beverages: | Bottled water and juices available |
| Availability: | Stand Alone Day Tour for local schools Incorporated into 3 Day and 5 Day Excursion Packages |



Contact Us | P: 07 3226 9150 | E: info@oceand.com.au | W: oceand.com.au



SCHOOL EXCURSION SAILING EXPERIENCES

Tour Name:
Locations:

Learn to Sail
Whitsunday Sailing Club Airlie Beach
Airlie Beach is situated in Tropical North Queensland – where the sun shines!
With temperatures remaining mild all year round it is the perfect place to sail at any time of year.
Learning to sail is all about having fun and getting a taste for on water activities. Students will have the opportunity to try sailing on either a Hobie Cat or Quest Mono Hull Sailing vessel.
This sailing experience will also focus on the social element of a sailing club environment, simply enjoying time spent with peers whether that be on the water, on the beach or in the clubhouse.
Students will learn the difference between crewing and helming and the experienced instructor will take them through rigging up a boat and preparing it for the day.

Catering:

Pre-packaged nutritious snacks and filtered water



Contact Us | P: 07 3226 9150 | E: info@oceand.com.au | W: oceand.com.au

Reef HQ Aquarium - Education Day Programs

Get up close to the wonders of the Great Barrier Reef through amazing aquariums, exhibits and attractions...it's the ultimate reef experience.

Reef HQ Aquarium's Education Team can help teachers initiate innovative programs about the Great Barrier Reef in schools. Our K-10 year level programs align with the Australian Science Curriculum and the current curriculum framework of the Queensland Studies Authority. However, our Education Team is flexible in their delivery and the units can be tailored to suit your teaching and learning needs. Our senior programs (Year 11-12 and Tertiary) are specialised to your syllabus and work program requirements.

If you don't have any set curriculum needs for your visit to Reef HQ Aquarium, you and your students can be taken on a fully guided tour, with the opportunity to:

- **Observe** live coral and reef creatures
- **Experience** the diverse habitats, ecosystems and behaviours of reef creatures
- **Appreciate** the requirements for a healthy reef ecosystem
- **Understand** why protecting the future of the Great Barrier Reef is important.

Day Program Times*

9:00am – 10:30am
11:00am – 12:30pm
1:00pm – 2:30pm

Day Program Prices**

Student (K-12) \$9.40
Tertiary Student \$18.20
Adult** \$21.20

*These are the recommended times, however they can be changed to suit your requirements with prior request.

**We offer a set free of charge ratio for supervising adults. Please contact the Education Team for these ratios.

How to make a booking

Bookings are required at least two weeks in advance for all programs on a first-come, first-served basis. We recommend that you book as soon as possible to avoid disappointment.

Further Information or Bookings:

Phone: +61 7 4750 0890
Fax: +61 7 4772 5281
Email: education@reefHQ.com.au

Please have the following on hand when making a booking:

- Contact details - phone, fax and email
 - Preferred and alternative dates
 - Preferred education program time
 - Approximate number of students attending and their year level/s
 - Reef Education Program
- (see table on reverse of this page for program outlines)



PRIMARY LEVEL



| Year Level | Reef Education Program | Program Outline and Australian Science Curriculum Alignment |
|------------|--------------------------|--|
| Foundation | Reef to Rainforest | Students will explore the unique and diverse world of living things and their needs in different environments through interactive experiences (Tour of Discovery Lagoon) and discovery tour of Reef HQ Aquarium (ACSSU002). |
| | Reef Rangers | Learn how human induced activities can impact the reef and what strategies and behaviours can be adopted to reduce this impact through our interactive Puppet Show and exclusive tour of the Turtle Hospital. The education program concludes with a Reef Ranger discovery tour of Reef HQ Aquarium (ACSSU002). |
| Year 1 | Living under the Sea | Students will explore healthy/unhealthy habitats through interactive activities conducted by our Education Team and partaking in an exploratory tour of Reef HQ Aquarium focusing on the external features of living things found within the Great Barrier Reef Marine Park (ACSSU017; ACSSU211). |
| Year 2 | Growing up on the Reef | How do reef creatures grow? Students will discover different life stages of certain marine animals by participating in interactive activities and exploring how different marine creatures grow on our "Growing up on the Reef" tour of Reef HQ Aquarium (ACSSU030). |
| Year 3 | Exploring the Reef | Students will be able to recognize and group living things based on the different characteristics they display and will be able to distinguish between living and non-living things on the reef (ACSSU044). |
| Year 4 | Circle of Life | Explore the different life cycles of animals on the reef through interactive activities conducted by our Education Team and participating in our "Circle of Life" tour of Reef HQ Aquarium (ACS-SU072). |
| | Reef Relationships | Students will investigate the different roles of living things on the reef and explore the interrelationships between various marine plants and animals (ACSSU073). |
| | Endangered Species | Students will explore why sea turtles are an endangered species through interactive activities and a visit to the Turtle Hospital. The Reef HQ Education program concludes with a tour of Reef HQ Aquarium where students can learn about other endangered species within the Great Barrier Reef Marine Park (ACSSU073). |
| Year 5 | Adaptations for Survival | Students will discover the amazing adaptations of Great Barrier Reef creatures and why these characteristics are essential to their survival (ACSSU077). |
| Year 6 | Reef at Risk | Students will investigate various impacts on the environment, with specific focus on the Crown of Thorns sea star as a natural pest and human induced threats to the Great Barrier Reef. The program will include a visit to the Turtle Hospital followed by our "Reef at Risk" tour of Reef HQ Aquarium (ACSSU094). |

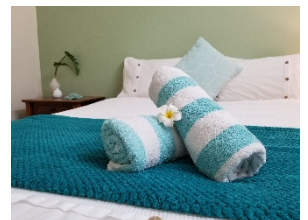
SECONDARY/TERTIARY LEVEL

| Year Level | Reef Education Program | Program Outline and Australian Science Curriculum Alignment |
|--|--|---|
| Year 7 | Classifying Creatures of the Reef | Students will develop their classification skills and have the opportunity to apply their skills using a dichotomous key in our interactive Discovery Lagoon (ACSSU111). |
| | Connecting Creatures Roles on the Reef | Explore the highly complex and amazing food webs and interrelationships found on the Great Barrier Reef through interactive activities conducted by our Education Team. Students will also partake in our "Connecting Creatures Roles on the Reef" tour of Reef HQ Aquarium (ACSSU112). |
| Year 8 | Reproducing on the Reef | Students will discover the different and strange reproductive strategies of marine animals (ACS-SU150). |
| Year 9 | Reef Communities | Students will investigate the highly diverse and amazing reef communities found on the Great Barrier Reef. Students will solidify their understanding for the complex ecological structures, interrelationships, biotic and abiotic requirements of reef communities (ACSSU176). |
| | Management of the Reef | Students will develop an understanding of the management and sustainability of the Great Barrier Reef Marine Park through interactive activities conducted by the Education Team and participating in the "Reef Rangers" tour of Reef HQ Aquarium (ACSSU176). |
| Year 10 | Climate Change | Students will develop an understanding of climate change impacts on the Great Barrier Reef and strategies and behaviours that can be adopted to reduce this impact (ACSSU189). |
| Senior/Tertiary We can tailor a program to suit your unit and curriculum needs | | |



ACCOMMODATION – SCHOOL EXCURSIONS

| | |
|------------------------|---|
| Name: | Bay the Bay Resort |
| Address: | Hermitage Drive Airlie Beach |
| Accommodation Style: | Budget Resort Rooms |
| Maximum # of Students: | 70 (depending on availability) |
| Features: | <p>By the Bay Resort prides themselves on quality and affordability for mid-sized budget resorts, with full kitchen facilities and resort style pool.</p> <p>The owner, Peter Upton, is a qualified teacher and specialises in exercise nutrition. Peter will bring these skills into the on-site activities for students.</p> <p>Walking distance to the main street in Airlie Beach</p> |
| Catering: | <p>Continental breakfast daily (cereal, toast, condiments, milk etc – GF and Veg options available) <i>*nut free</i></p> |
| Beverages: | Bottled water, juice and milo |
| Availability: | <p>These rates are valid Monday to Thursday nights during school terms.</p> <p>Also available for school holiday packages, but rates will increase</p> |



LUXURY ACCOMMODATION – SCHOOL EXCURSIONS

| | |
|------------------------|---|
| Name: | Seastar Apartments |
| Address: | Nara Avenue Airlie Beach |
| Accommodation Style: | 2 and 3 bedroom apartments, with spacious living area and fully self-contained kitchen 3 bedroom 2 bathroom apartment – max 6 students 2 bedroom 2 bathroom apartment – max 4 students |
| Maximum # of Students: | 60 (depending on availability) |
| Features: | Seastar Apartments are luxury 2 and 3 bedroom apartments with ocean views, and a beautiful infinity edge pool in the complex. Apartments are in blocks, so depending on ages and requirements teachers can be in the same apartment as students, or in the same block. Onsite Managers available 24/7 Walking distance to the main street in Airlie Beach |
| Catering: | Continental breakfast daily (cereal, toast, condiments, milk etc – GF and Veg options available) <i>*nut free</i> |
| Beverages: | Bottled water, juice and milo |
| Availability: | These rates are valid Monday to Thursday nights during school terms. Also available for school holiday packages, but rates will increase |



EXAMPLE DINNER MENUS INCLUDED IN STUDY TOURS

Day One – 2 Options

Golden fried calamari w/ chips, tartare & lemon

Beer battered fish & chips w/chips, tartare & lemon

Day Two – 3 Options

Beef Lasagne w/ Salad \$17

Spaghetti Bolognese w/ Salad

Fettuccini Carbonara w/ Salad

Day Three – 2 Options

Chargrilled Beef Burger w/ salad & chips

Vegetarian Burger w/ salad & chips

Day Four – 2 Options

Braised Lamb Shanks with Mash and Vegetables (GF)

House made Gnocchi, Blue Cheese Sauce and Tomato Sugo (VG)

Other Dinner Options

Thai Fish Curry w/ Asian Veg and Rice (GF)

Beef Vindaloo Curry w/ Rice

Chicken Korma Curry w/ Rice (GF)

Honey Soy Chicken Wings (1/2 kg)

Roasted Garlic Butter Mini Loaf (V)

Kids/Side Mac & Cheese

Chili Con Carne w/Rice (GF)

House made Gnocchi, Blue Cheese Sauce and Tomato Sugo (VG)

Side salads and steamed vegetables available

Dessert Options (\$10pp extra)

Death by Chocolate

Citrus Curd Tart

Flourless Wild Berry Cheesecake (GF)

All desserts served with a dollop of cream

Menus can be adapted to suit budget and health requirements. GF, and Vegan options available ever day. All meals are nut free.

PROFESSIONAL PROFILE

Carolyn Lewis
Director/Business Manager

Carolyn is an industry qualified Business Manager with operational experience in tourist based marine charters in the Whitsundays and in Moreton Bay. Her specialist applications cover marine operator management including recruitment & management of staff and crew logistics, budgeting, auditing and strategic planning.



With more than 15 years' experience Carolyn's nautical experience is considerable, having organised 10 Sydney to Hobart yacht races for Ocean Affinity, project managed a fleet of vessels for luxury charter and managed large team of marine professions. Carolyn is passionate about preserving the Great Barrier Reef and passing on her knowledge of sustainable reef practices all guests and staff involved with Ocean Dynamics tours.

Carolyn's experience includes:

- Operational Experience – Motor and Sailing vessels up to 60 foot
- Recruitment, management and training of guest services team and marine professions – to 5 star service standards
- Environmental Compliance - managing the environmental policies of the company and working with the team to ensure that sustainable reef practices are maintained throughout the business.
- Business and operational planning including all budgeting requirements, measuring KPI's, growth areas regular SWOT analysis etc.
- Regular liaison with key industry bodies including QLD Tourism, Super Yacht Base, Maritime Safety Queensland, GBRMPA & other industry bodies
- Management and updates of comprehensive Safety Management Systems and OH&S policies relating to charter vessels.
- Preparing for annual audits by Maritime Safety Queensland of all vessels and safety systems.
- Ensuring maintenance and services is carried out on all vessels, vehicles and aircraft owned by the company (including 8 vehicles, 5 vessels and 1-2 aircraft).
- Ensuring all safety equipment is serviced annually (ie fire systems, life rafts, life jackets) and that flares and other safety related items are kept in date.
- Marketing and promotional material design and updates.

Specialisations

- Operational Management
- Logistics
- Environmental Sustainability
- Project Management
- Strategic Planning
- Organisational ethics
- Marine Recruitment & Training

Qualifications

- Business Diploma
- Master 5/MED2
- Licensed Venue Manager
- Commercial Pilots Licence
- Jet Ski Guide
- Senior First Aid (including CPR & O2)
- Elements of Shipboard Safety (ESS)

Associations

- Queensland Tourism
- Member Royal Qld Yacht Squadron
- Member Cruising Yacht Club Australia
- Member Yachting Australia



PROFESSIONAL PROFILE

Bronte Lewis

Business Development Manager

Bronte is the eldest child in the Lewis family, has come into the family owned business to assist with Business Development, HR and staff training and development.

With years of experience in and around the business while growing up, Bronte has a first hand knowledge of the requirements of 5-star service and guest expectations. In her role of BDM, Bronte looks after website development, the client journey and tailor-made travel solutions.

Bronte also looks after mentoring and training junior staff, and other HR aspects.

Bronte's experience includes:

- Creating Bespoke tours for discerning guests;
- Liaising with management to prepare quotations and proposals;
- Business development, including website and social media;
- Managing guest expectations;
- Safety and compliance audits;
- WH&S policies and updates;
- Mentoring and support of junior team members;



Bronte's Qualifications Include:

- Bachelor of Exercise & Nutrition
- Currently studying Masters in Primary School Teaching
- Senior First Aid Trained (including O2)
- Boat and Jet Ski Licence
- Elements of Shipboard Safety
- Blue Card

PROFESSIONAL PROFILE

John Mehmet
Nature Guide/Jetski Guide & Coxswain

John has been employed by Ocean Dynamics for 2 years and his love of the environment, coupled with his qualifications in marine science, make him a expert guide and skipper.

With 10 years experience working in World Heritage national parks in Queensland, including Fraser Island, and now the Great Barrier Reef Marine Park, John is an expert at sharing his intimate knowledge and experience of the region with guests.

His outgoing and vibrant personality are contagious, allowing him to pass on important information regarding the reef and preserving it for years to come in a pleasant and natural manner.

John's experience includes:

- Whale watching tours - sole crew member with 8 guests - skipper, commentary and guest service for 4 hour tours.
- Skipper of 30 foot Kevla Cat - taking guests on intimate private charters in the GBR (including Whitehaven Beach, the inner and outer reef)
- Deckhand/host onboard 60 foot luxury cruiser - looking after guests on private charters, in particular informing them about the region and the GBR
- Snorkel Guide - assisting guests in the water and explaining the types of reef, marine life and about the eco systems of the GBR.
- Standup Paddleboard Instructor - teaching guests how to use the SUP
- Environmental Compliance - ensuring the environmental policies of the company are adhered to and advising on updates and improvements.
- Assisting with SMS updates and compliance.
- Maintaining jet skis and outboard motors - routine servicing and troubleshooting.
- Guest services - in the office & on vessels.
- Maintaining the Ocean Dynamics "Living Reef" Aquarium in our office at Port of Airlie Marina
- Marketing and promotional assistance to the management team - ie working at various trade shows and seminars.



Specialisations

- Operational Management
- Logistics
- Environmental Sustainability
- Project Management
- Strategic Planning
- Organisational ethics
- Marine Recruitment & Training

Qualifications

- Bachelor of Administration (Marine Resources)
- Open Coxswain
- Master 5/MED2 (to be completed Oct 2018)
- Nature Guide
- Jet Ski Guide
- Senior First Aid (including CPR & O2)
- Elements of Shipboard Safety (ESS)
- PWC Licence
-



PROFESSIONAL PROFILE

Peter Upton

Owner/Manager – By the Bay Resort
Health, Fitness and Longevity Researcher

Peter and his wife Carolyn have owned and operated a multi-award winning hospitality accommodation facility in the Whitsunday township of Airlie Beach for 25 years.



They have a daily hands-on involvement with the operation of this multi-faceted operation including selection, training and management of staff, advertising and marketing, operational duties, back-of-house administration and book-keeping, compliance duties for a Queensland liquor licence, food areas, swimming pool and accommodation hygiene requirements.

Peter's Qualifications Include:

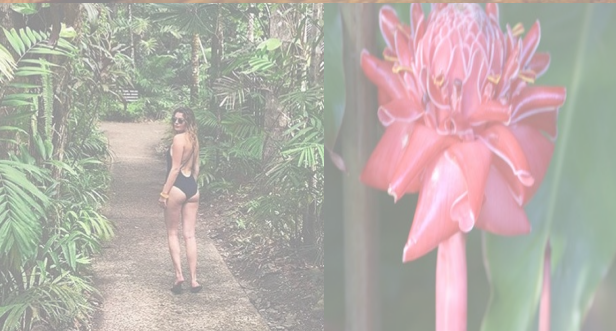
- Bachelor of Human Movement Studies (Exercise Physiology)
- Diploma of Teaching
- Post Graduate Diploma in Occupational Health and Safety
- Diploma of Management

Prior to moving to the Whitsundays, Peter was a tertiary lecturer in the areas of health and preventive medicine for 13 years, conducting nationally accredited courses including:

- Workplace Health and Safety Officer Courses Level 1 and 2
- St John Senior First Aid Courses
- Sports Coaching Level 1 and 2
- Train the Trainer and Instructional Skills
- Fitness Leader/Personal Training/Gym and Strength Training Courses

Peter has also established and managed various businesses including:

- Health and Fitness Centres
- Diagnostic Health and Fitness Services



Congratulations

to

*Ocean
Dynamics*

ECO certified since

10th September 2008

**demonstrating commitment to
quality & environmental
responsibility**

Rod Hillman
Chief Executive





Ocean Dynamics

has been awarded certification at the level of

Advanced Ecotourism

for the following products

• Luxury Boat Charters • Whale Watch Tour • Jet Ski Adventure Tours



Rod Hillman - Chief Executive



Date Certified: 10/09/2008

Valid Until: 31/12/2020